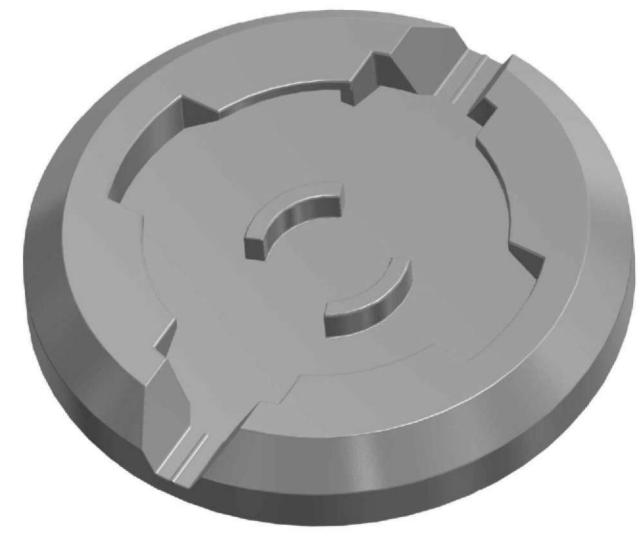


LOADS		SHEAR[kN]	TENSION[kN]
BREAKING LOAD	BL	420	500
PROOF LOAD	PL	263	313
SAFE WORKING LOAD	SWL	210	250

TOTAL WEIGHT: 2,7 kg



Artikel-Nr.: TS20010-001

Breech Base Bodenplatte DF-66

Plomben.de
Fuchskavelweg 1
16348 Wandlitz

Fon: +49 (0) 33397 26 80 34
Fax: +49 (0) 33397 26 80 33
mail: info@plomben.de